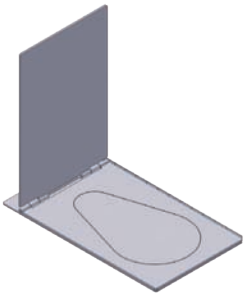
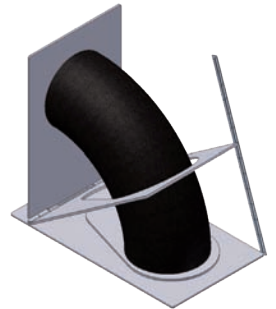


FMT

FMT is the unique Foldable Marking Tool for pipes and bends. In less than 5 minutes pipes and bends are marked up for cutting in any particular angle.

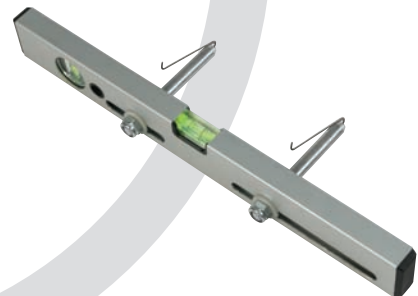
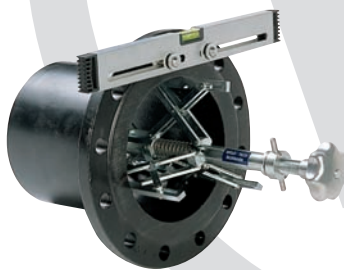


Cat. No.	Range mm.	Range inches	Weight (Kg)	Weight (lb)
FMT 1	33 - 90	1,2 - 3,5	2	4
FMT 2	100 - 219	3,9 - 8,6	8	16
FMT 3	244 - 508	9,6 - 20	26	52



WT Flange Leveler

WT Flange Leveler is always a good tool to have. The WT Flange Leveler can be used for flanges with bolt holes from 16 mm and larger. With this design you avoid the chance of misplacing loose parts, and you will have no need of using adjusting tools.



WT High / Low



The WT High/Low is designed to quickly and accurately measure inside High/Low pipe alignment.