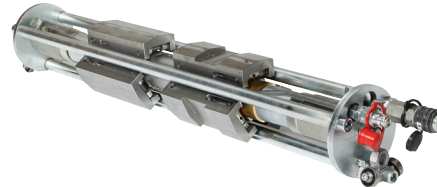
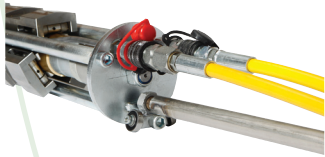
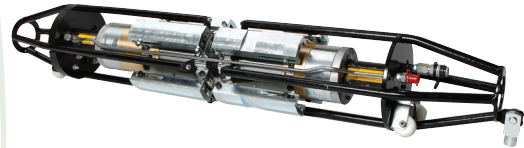


IHP

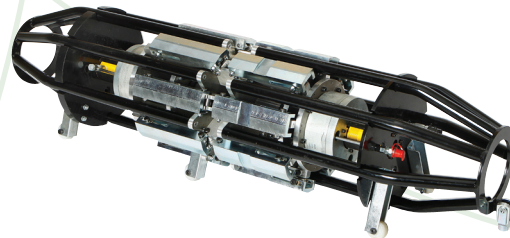
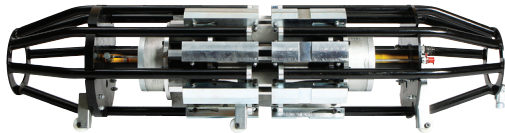
NON-POWERED (5" - 24")



| Cat.no. | Range ID (inch) | Range ID (mm) | Shoes | Weight (kg) | Length (mm) |
|----------|-----------------|---------------|-------|-------------|-------------|
| MINI IHP | 5 - 10 | 120-270 | 2 x 3 | 20 | 844 |
| MINI 812 | 8 - 12 | 165-320 | 2 x 3 | 25 | 844 |



| Cat.no. | Range ID (inch) | Range ID (mm) | Shoes | Weight (kg) | Length (mm) |
|---------|-----------------|---------------|-------|-------------|-------------|
| IHP1016 | 10 - 16 | 238-450 | 2 x 4 | 85 | 1485 |
| IHP1420 | 14 - 20 | 284-506 | 2 x 6 | 109 | 1485 |



| Cat.no. | Range ID (inch) | Range ID (mm) | Shoes | Weight (kg) | Length (mm) |
|---------|-----------------|---------------|-------|-------------|-------------|
| IHP1824 | 18 - 24 | 383-601 | 2 x 8 | 176 | 1523 |

Each clamp will be delivered with:
 15m Hydraulic hose
 15m Reach rod
 1 handoperated pump with valve-kit

- All IHPs, non-powered as well as powered, are able to:
- **Reform** pipes with wall thickness up to **25 mm.** and
 - **Align** pipes with wall thickness up to **50 mm.**